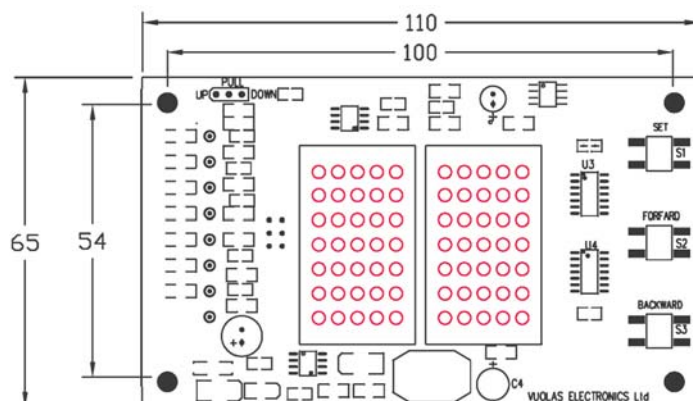
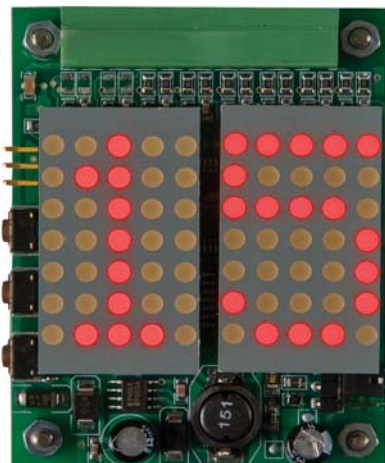


# S2DM30 / S2DMS30

PIKOTEC

## Dot Matrix Display Device for Lifts



**S2DM30** is a microcontroller based dot matrix display device for lifts. The fundamental idea behind the S2DM30 is having a considerably small 2-digit device, yet having almost all features that 3-digit models have. The audio feature is not available for it. It can be assembled either to the car or to the level. It can present floor markings, direction arrows and indicators. It accepts wide range of nominal supply voltages, because it is equipped with high efficiency switched mode power supply. Advanced digital filtering enhances robustness in poor signal quality environments.

### Functional specifications

- Applicable for assembly either to the car or to a level
- Maximum number of floors is 32
- Presents floor markings, direction arrows and indicators
- Floor mark consists of 2 characters: 0...9, A...Z, space \_ - ( ) \* + , . / ; ;
- Scrolling of arrows can be made automatically. Scrolling time is customer configurable. External activation of arrow scrolling is also possible (in parallel interface version S2DM30 this makes indicators unavailable)
- VEBUS serial interface (in S2DMS30 version) enhances control possibilities (makes available external control of audible signaling, external activation of arrow scrolling concurrently with indicators, etc)

### Visual specifications

- Display resolution: 3 pieces of 5 x 7 led matrixes
- Active area is 30 mm x 68 mm
- Viewing angle: min. 60°
- Color: Red on stock, please inquire for special colors

### Electrical connections

- Operating voltage range, 12...30 VDC (max. 5% ripple voltage)
- Current consumption, 150...75 mA @ 12...24 VDC (without gong)
- Setup copy function interface
- Parallel interface in 3DM30 has:
  - Internal 10 kohm pull-down or pull-up resistors depending on jumper settings
  - Input voltage range: 0...30 VDC
    - Logic 0: 0...1VDC
    - Logic 1: 10...30 VDC
  - Parallel mode position input coding is selectable: Binary/Gray
  - 2 indicator control inputs (alternatively configurable to control arrow scrolling)
- S2DMS30 has VEBUS serial interface

### Configuration

- Device configuration is made by means of displayed menu and 3 push buttons covering configuration of:
  - Installation position selection (Car/Landing)
  - Input coding (Binary/Gray)
  - Level where gong sounds if in landing-mode (0...31)
  - Scrolling time (1...5)
  - Select IND1 and IND2 control: arrow scrolling / indicators
  - IND1 indicator symbol
  - IND2 indicator symbol
  - Floor marks

### Size and environment

- Physical dimensions are 70 mm x 54 mm x 20 mm (+ additional space for connectors)
- Operation environment: 0...60 °C, RH: <85% (no condensation)
- Not to be used in wet, moist or dusty environment

S2DM30 / S2DMS30