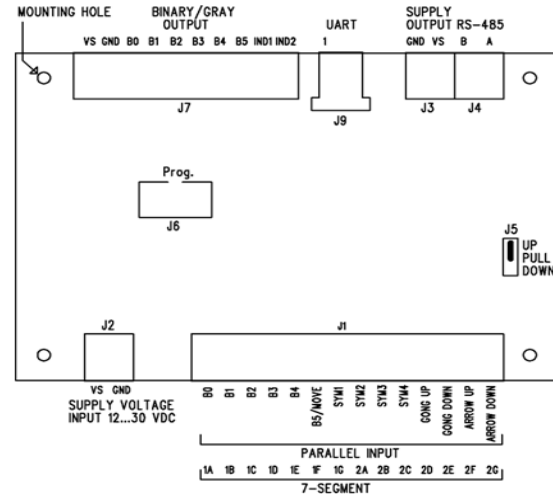
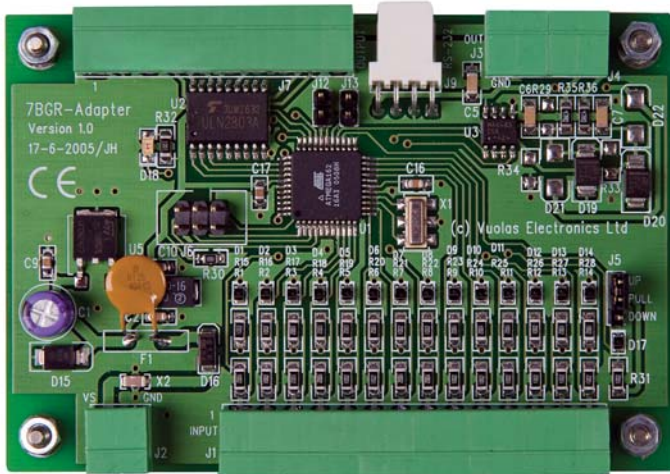


VEBUS-A1

VEBUS adapter



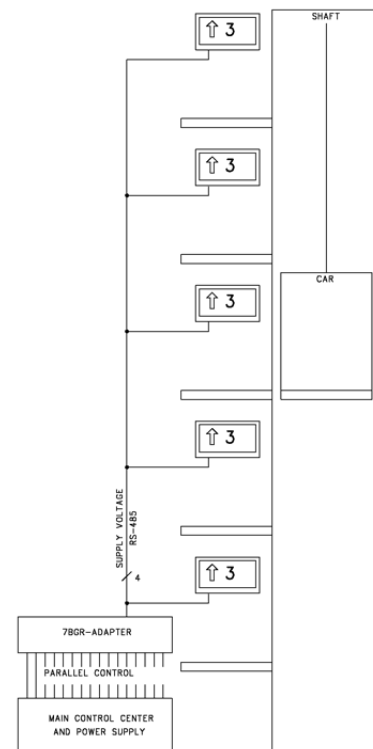
VEBUS-A1 is a parallel interface to serial VEBUS interface converter card. It is intended for lift applications. It makes possible to connect devices that use conventional parallel interface to systems that utilize serial VEBUS interface. Optionally it can be used to interconnect old 7-segment signaling devices with parallel or serial controlled systems.

Features

- Intended for lift applications
- Maximum number of floors is 32
- Converts conventional parallel interface into a serial VEBUS interface
- VEBUS serial interface enhances control possibilities of many Pikotec Oy manufactured products. E.g. it can make available external control of audible signaling, external activation of arrow scrolling concurrently with indicators, etc

Electrical connections

- Operating voltage range, 12...30 VDC (max. 5% ripple voltage)
- Current consumption, 33 mA @ 12...24 VDC (no load)
- Parallel interface has:
 - Internal 10 k ohm pull-down or pull-up resistors depending on jumper settings
 - Input voltage range: 0...30 VDC
 - Logic 0: 0...1VDC
 - Logic 1: 10...30 VDC
 - 4 inputs for the symbol indications control
 - 2 inputs for the gong control (GONG UP, GONG DOWN)
 - 2 inputs for arrow direction control (ARRUP, ARR-DOWN)
 - 1 input that activates arrow scrolling
- VEBUS serial interface



Example 1: A main control unit with a conventional parallel output interface is connected to a VEBUS based system using VEBUS-A1.

Size and environment

- Physical dimensions are 95 mm x 65 mm x 18 mm (+ additional space for connectors)
- Operation environment: 0...60 °C, RH: <85% (no condensation)
- Not to be used in wet, moist or dusty environment